



筑波大学
University of Tsukuba



SEAMEO-The University of Tsukuba Symposium IX

Theme: Resilience for Global Citizenship

Sub-Theme: Challenges in Education under COVID-19

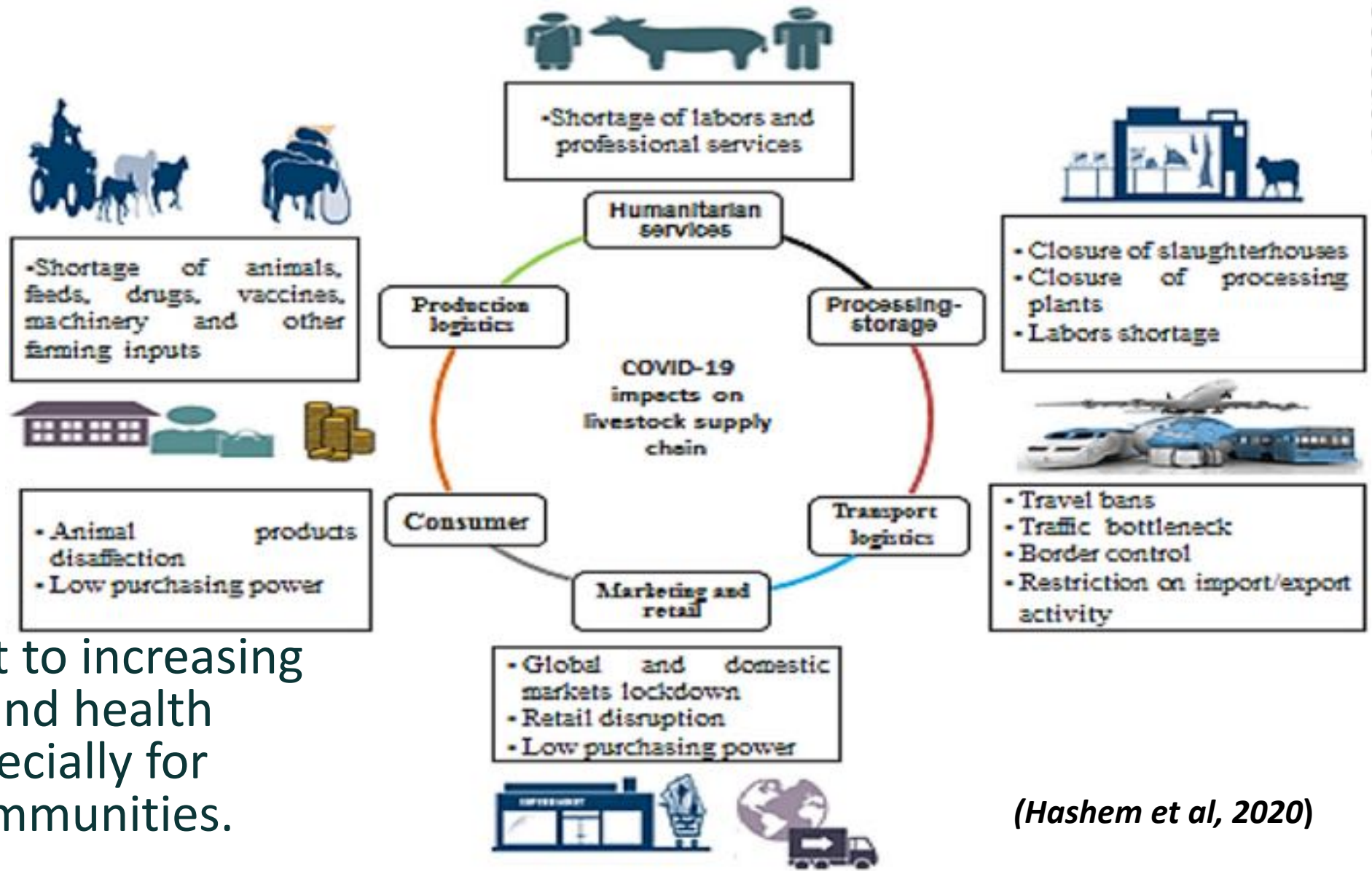
COVID-19 Pandemic an opportunity for Accelerating Nutrition Literacy in supporting Global Citizenship Education

Muchtaruddin Mansyur

Virtual

11 February 2021

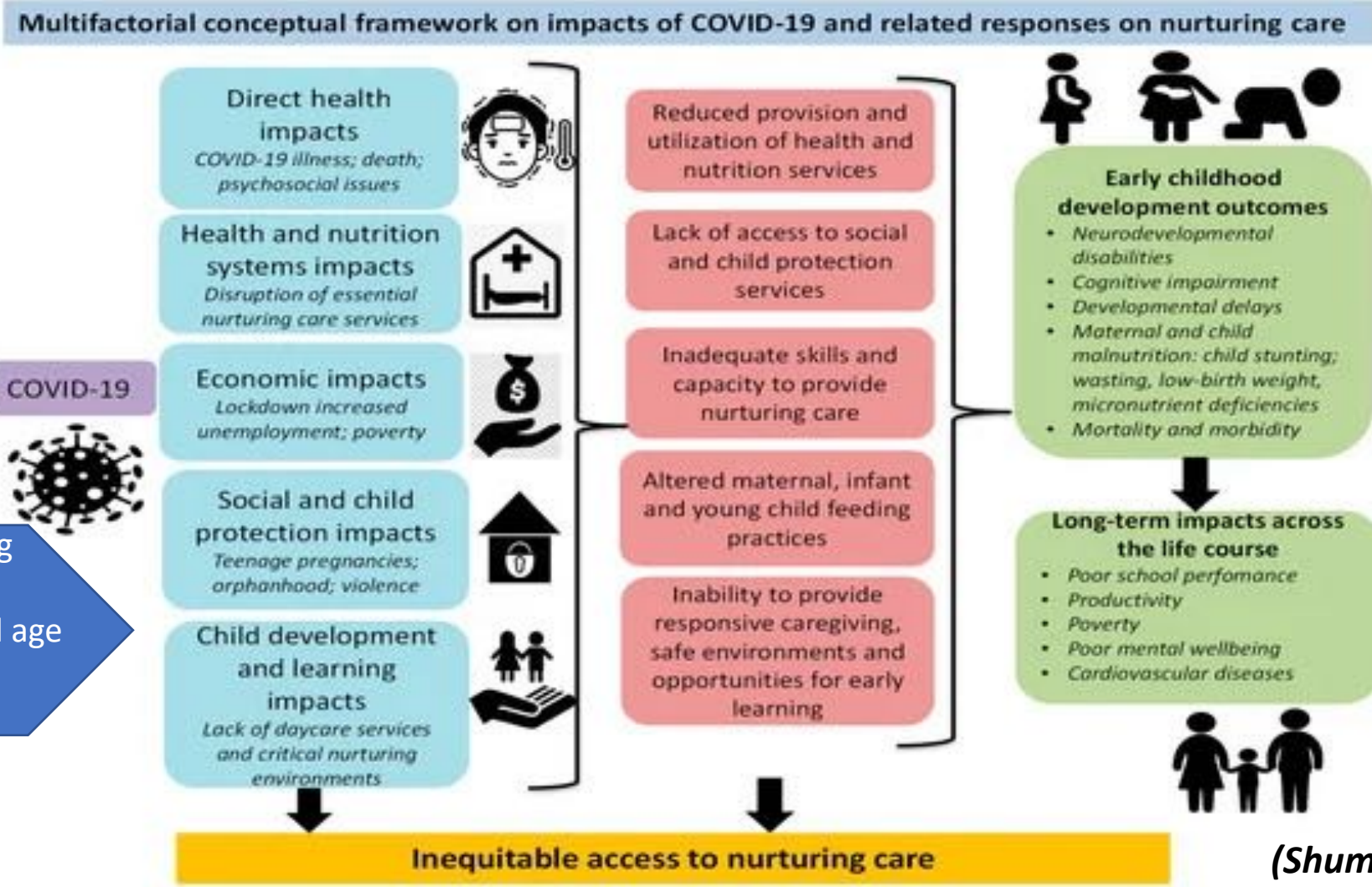
Food System Fragility amidst COVID-19 Pandemic



- This is a threat to increasing malnutrition and health disorders, especially for vulnerable communities.

(Hashem et al, 2020)

Food System Fragility amidst COVID-19 Pandemic



Impact on Early Childhood

This is a threat to increasing malnutrition and health disorders, especially school age children in vulnerable communities.

(Shumba et al, 2020)

Strengthening solidarity with Global Citizenship Education (GCEd)

- The urgent and global action are requiring all parties' participation
- Global solidarity and social support are needed
- Addressing the challenges of food security and underlying malnutrition
- GCEd bring young generation to have more understanding of global situation and challenges and involved in local/global issues such as nutrition and health problems solving.



SEAMEO RECFON's Vision Statement

“A Centre of Excellence for building capabilities in food and nutrition for all in Southeast Asia”

SEAMEO RECFON shall be instrumental in empowering its stakeholders at the individual, institutional, and community levels to address their food and nutrition issues and concerns through appropriate program interventions provided to them.

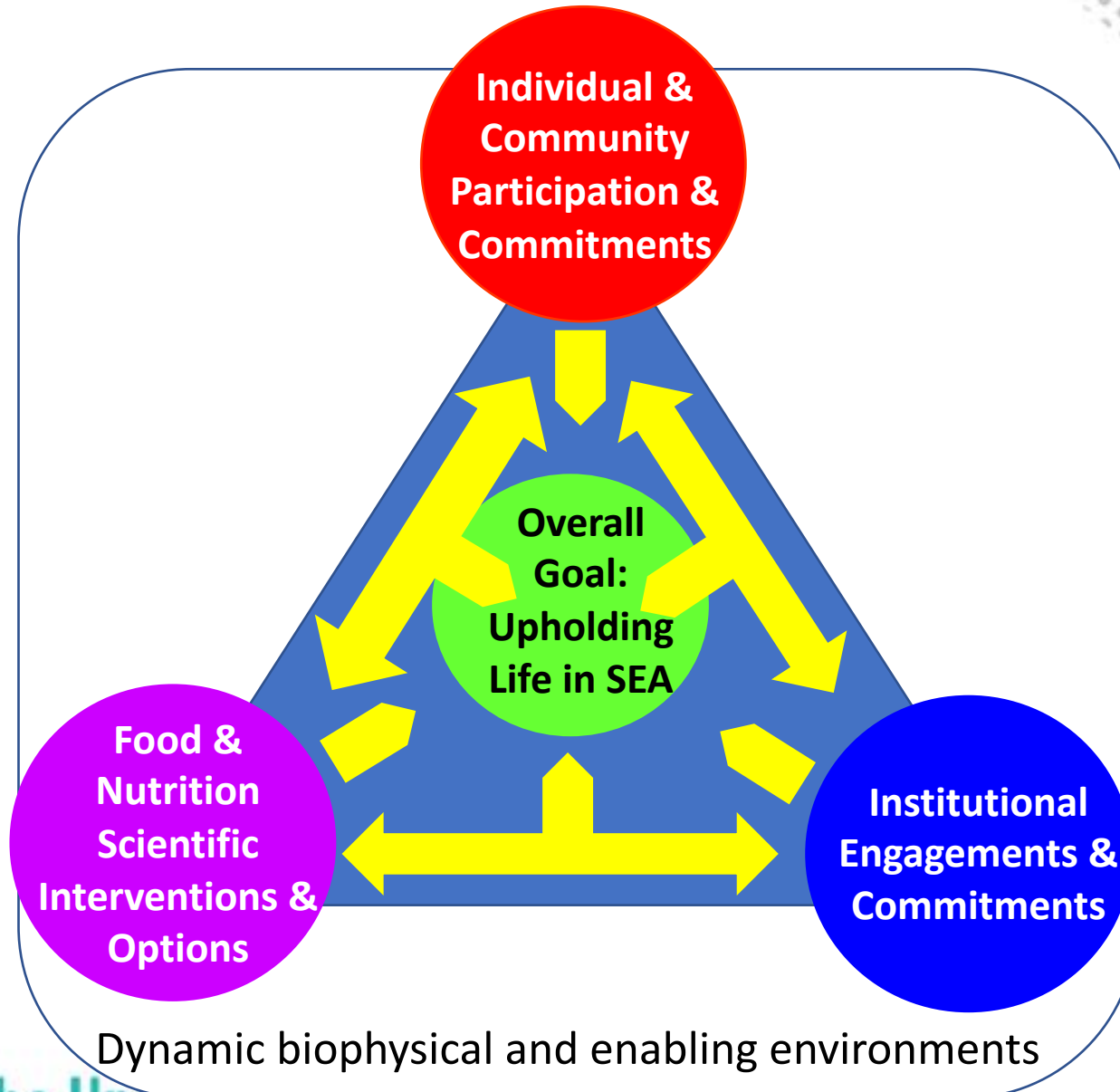
SEAMEO RECFON's Mission Statement

“To provide food and nutrition development options for better quality of life for the peoples of Southeast Asia”

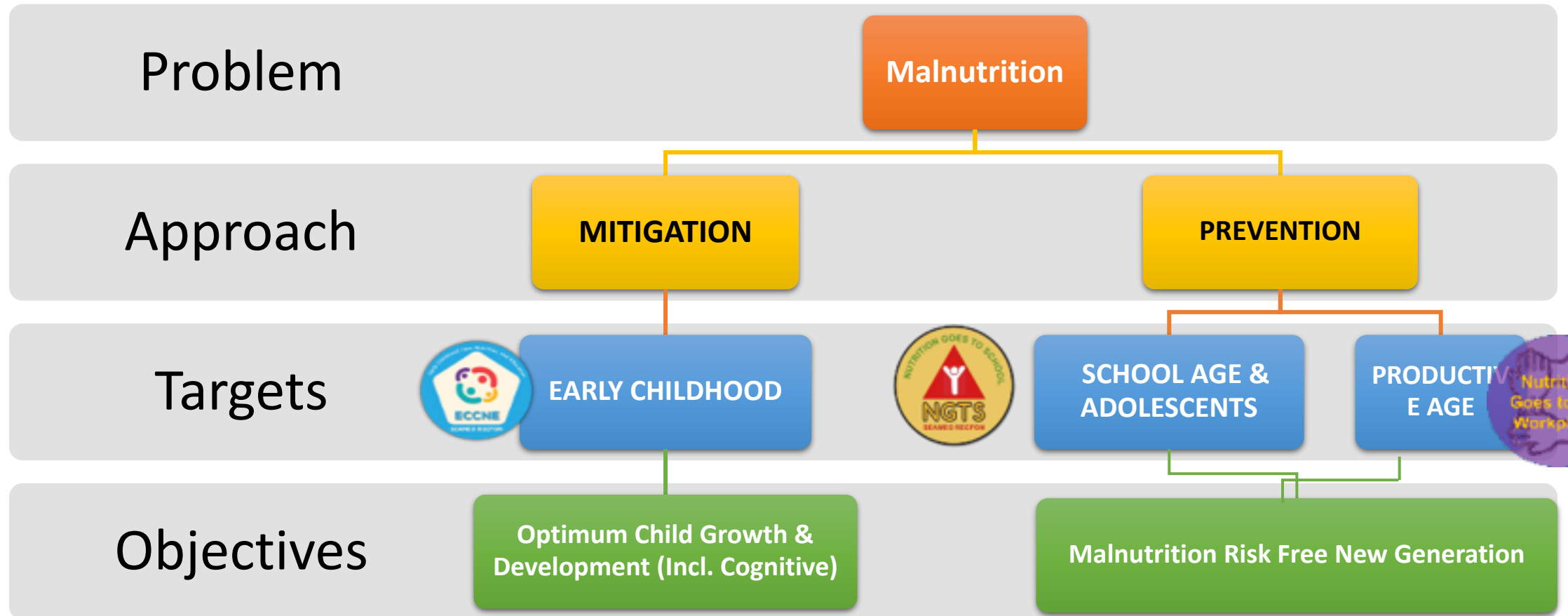
The Centre shall optimize its mandates to dispense innovative products and services in food and nutrition that could facilitate decision-making of its stakeholders to attain better quality of life for themselves.

RECFON's 3rd FYDP Framework

MINDFUL in Southeast Asia
(**M**ulti-sectoral and **I**nclusive **N**utrition **D**evelopment for **U**pholding **L**ife)



SEAMEO RECFON Approach in Overcoming Malnutrition



Life Span based Flagship Program



Pre-natal to 5
YO



6-17 YO



> 18 YO

Local Food Based Optimizing Support

**Achieve SDG 2, 3, 4, 6 and 17, Industrial
Revolution 4.0 & 5.0 Society**

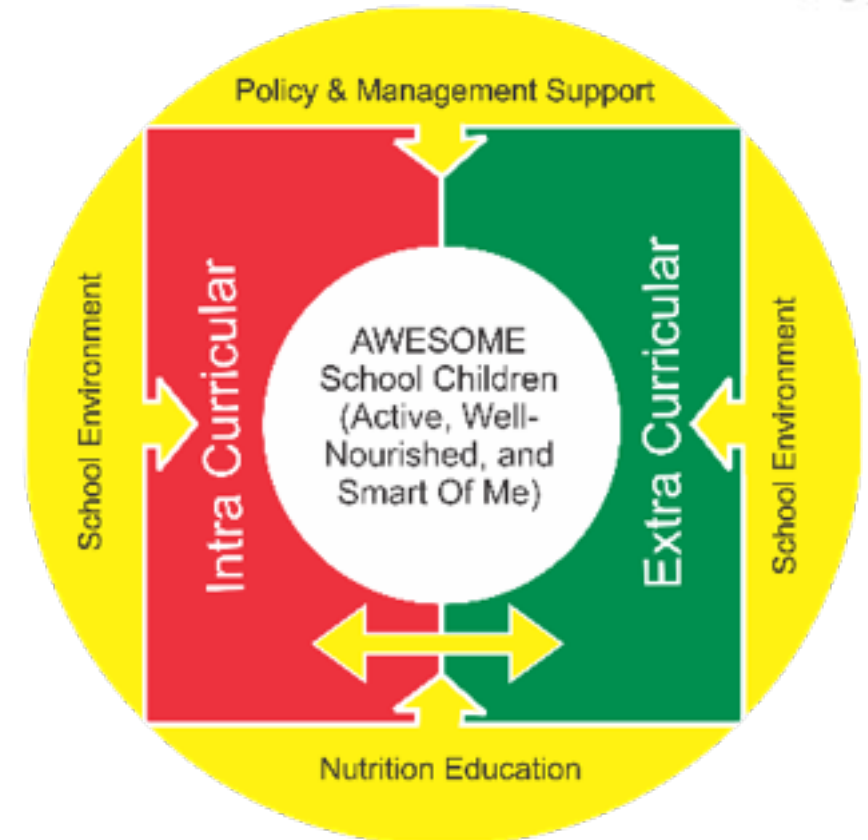
Capacity Development of Teacher & Headmaster

- ❑ Face to Face, Online and Blended Training on Health and Nutrition
- ❑ Webinar – sharing best practices on school based nutrition promotion
- ❑ Training on School Based Nutrition Promotion Management



Student' Characters Building

AWESOME School Children; Physically Active, Well-Nourished, and Smart Of Me with the strong characters; respect each other, prioritizing togetherness, behaving in a hygienist and healthy life, come along with; nutritional literacy, and the use of local food in maintaining food security



Graduate Students Internship Program

Bring the graduate students to have;

- The event for students to be independent, adaptive, creative, and HOTS learning
- Multicultural and multidisciplinary problem solving training
- Competency development facilities in the multidimensional fields with soft-skill abilities for the work world



感謝

Thank you

ขอขอบคุณ

Terimakasih



Follow Us!



www.seameo-recfon.org



[@SeameoRecfon](https://www.instagram.com/SeameoRecfon)



[Seameo Recfon](https://www.youtube.com/SeameoRecfon)



[Seameo Recfon](https://www.facebook.com/SeameoRecfon)



[@SeameoRecfon](https://twitter.com/SeameoRecfon)



[Seameo-recfon](https://www.linkedin.com/company/seameo-recfon)

**“A Centre of Excellence for building capabilities in food and nutrition
for all in Southeast Asia”**

Address

SEAMEO RECFON Building
Jl. Salemba Raya 6, Jakarta 10430
Indonesia